

Installation instruction do88 performance Intercooler for Porsche 911 TT (996) 99-05

Part number: ICM-200-996

This instruction shows how to replace the OEM intercoolers with do88 performance intercoolers.

At this type of installation we always recommend that you have mechanical experience and knowledge about safety during work on vehicles.

Parts included:

1. Left intercooler 1pc
2. Right intercooler 1pc
3. Turbo-Intercooler hose right Intercooler 1pc
4. Intercooler-Y pipe hose right Intercooler 1pc
5. Turbo-Intercooler hose left Intercooler 1pc
6. Intercooler-Y pipe hose left Intercooler 1pc
7. Hose clamps 8pcs
8. Bushing holders 2pcs M6
9. Bushing holders 4pcs M8 (2pcs in picture)
10. M6 Screws 8pcs
11. Large washers 12pcs
12. Thread locker
13. Coupling adaptors

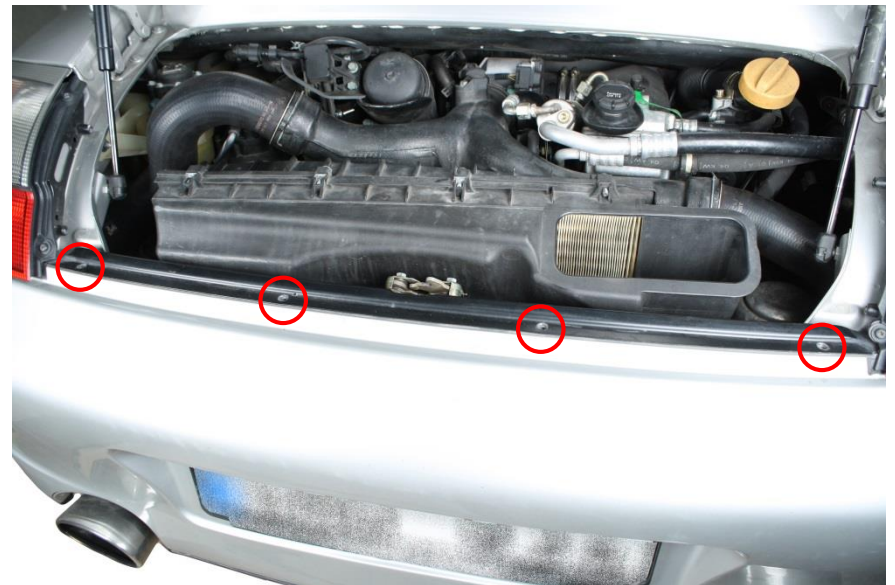


1. Lift car and remove rear wheels.

2. Loosen 2pcs Philips 2 screws from each rear light and then remove rear lights by pulling them rearwards from car. Disconnect cable by pushing contact lock tab and pull contact apart.

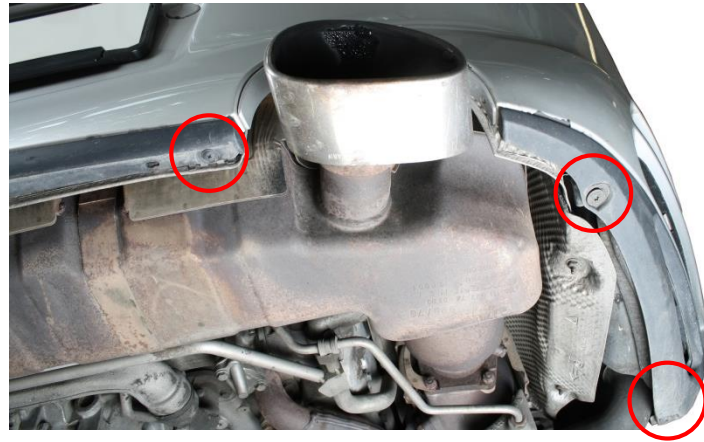


3. Remove 4pcs Philips 2 screws located on the top of the rear bumper. Remove the metal bracket.



4. Remove the Torx T30 in each wheel arch the holds the upper edge of the bumper from underneath.

Remove 6pcs Torx T30 screws from the bottom of the rear bumper. Picture shows three of them, the other three are positioned in the same locations on the left hand side of the car.



5. This step should be performed with the help of an assistant.

On both sides pull the bumper cover out from the fender to loosen the plastic clips that holds it in place.

Now remove the bumper from the vehicle by carefully pulling it rearwards about 15cm.

When bumper have some distance from the vehicle, disconnect the electrical connector to the license plate lightning by pressing its retainer clip and pulling apart.

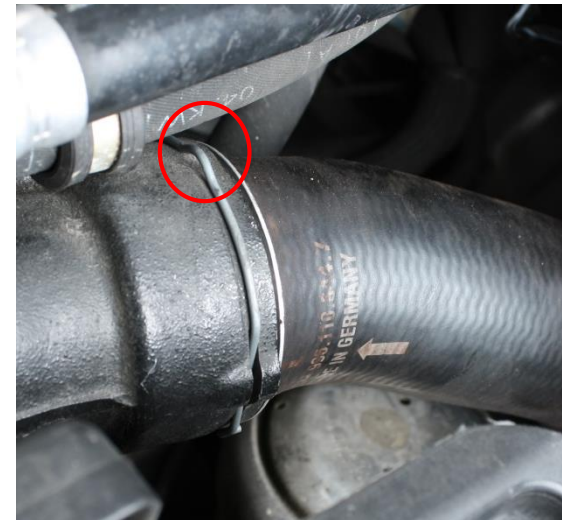


6. From each rear part of the rear inner fenders, Remove 4pcs Torx T25 screws and 2pcs plastic Hex 10mm nuts and then remove them from the car.



7. Remove all the intercooler hoses (4pcs). All hoses ends have clips except on the turbo outlets (Hex 7mm).

Remove the clips by prying out the quick coupling lock clips with a flat screwdriver about 10mm. Then pull the hose out from the connections.



8. Before you perform this step, make sure to support the intercooler to prevent it from coming loose before you want it to.

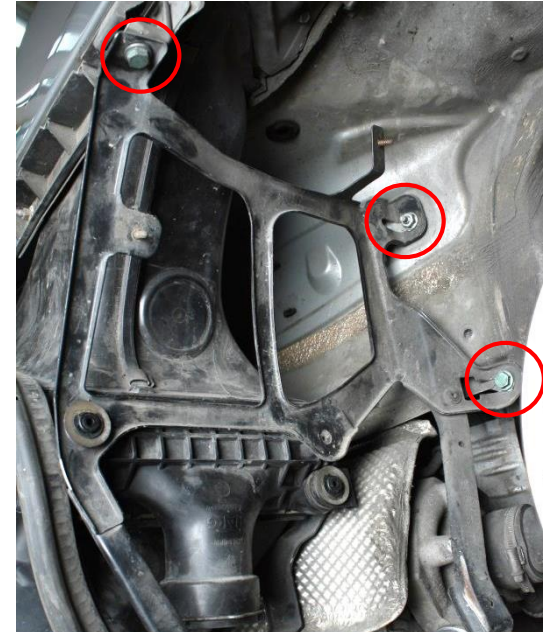
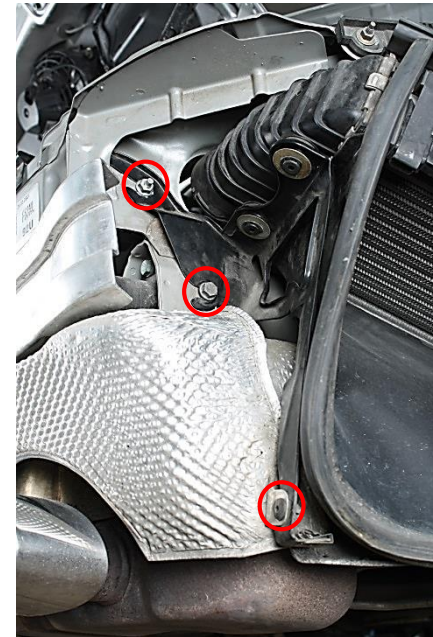
From rear part of intercooler support bracket on both sides, remove 1pc Torx T25 screw, 1pc 13mm hex screw and 1pc 13mm hex nut.

9. On both sides, from underneath remove 2 pcs 13mm hex nuts holding the heat shield to the intercooler support frame. Gently bend the heat shield downwards away from the screws.



10. From front part of the intercooler support bracket on both sides remove the two 13mm hex screws and one 13mm nut .

Now the intercooler assembly are loose and you remove it from the vehicle by moving it forward then pull the rear part out from the vehicle and remove the intercooler with support frame down/rearwards from vehicle. Do this with both intercoolers.



11.

Remove the 4pcs metal C-clips from each intercooler that holds it in the support frame by prying the C-clip out of the groove in the original intercooler with a flat screwdriver.

Now remove all 4 washers and then remove intercooler from support frame together with the air guides.



12.

From both intercoolers, remove the intercooler inlet air guide by unclipping the 6 metal fasteners that holds it to the outlet air guide with a flat screw driver.



13.

To fit the do88 performance intercoolers you need to modify the air guides by grinding down the small edges pointing towards the core according to picture in all 4 air guides.



14.

Install two included aluminum bushing holders on both intercoolers. NOTE! On MY 2000 and early 2001 do not install bushings as described below. Just install 2pcs large M8 bushing holders per intercooler.

Right hand side:

1. Install one M6 bushing holder in the outer right screw hole with one large flat washer under the bushing holder.
2. Install one M8 bushing holder in the left side screw hole.

Left hand side:

1. Install one M6 bushing holder in the outer left screw hole with one large flat washer under the bushing holder.
2. Install one M8 bushing holder in the right side screw hole.

Note! Use a small amount of the supplied thread locker on all the threads, torque loosely with a plier until the back of the bushing holder is flat against the intercooler.



15.

Position the two air guide halves to the do88 performance intercooler and align it with the core according to picture. Fasten the air guides to the intercooler by pressing down the metal clips released in step 12.

Do this with both intercoolers and make sure they are positioned correctly with inlets pointing downwards and outlet pointing towards Y-pipe.



- 16.** Install both intercoolers in their support frames and then fasten them by installing 4pcs large washers and 4pcs M6x10 hex head screws in each bushing position on each intercooler according to picture. Use thread locker and tighten loosely.

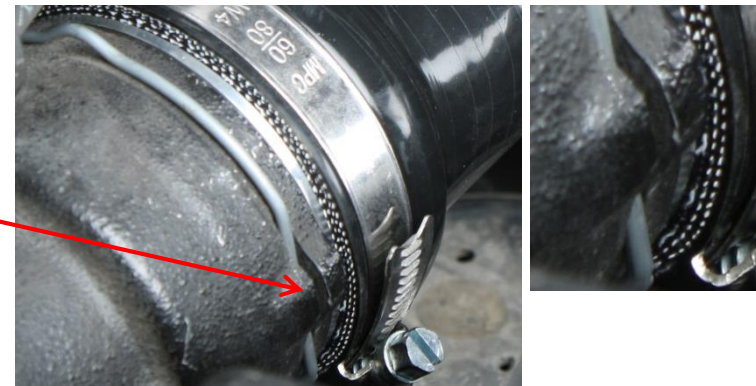
Install both intercooler support frames in vehicle in reverse order described in step 8-10.



- 17.** Gently remove the stock O-ring seals from the stock intercooler hose ends towards the Y-pipe. Make sure the O-rings does not get stretched while removing them. Install the O-rings on the do88 coupling adaptors. Make sure the O-ring does not get twisted while re-installing it on the do88 coupling adaptors.



- 18.** Install the do88 coupling adaptors into the Y-pipe on both sides. At first install them without the locking clip. After they are pushed into the bottom then reinstall the locking clips and make sure it holds the adaptor safely.



- 19.** Install all parts in reverse order except for the hoses which you install like described below.

Install all 4 supplied silicone hoses with the 8pcs supplied hose clamps in their positions according to included parts list on page 1 in this instruction. Tighten all hose clamps to 5 Nm. On both sides, make sure the turbo outlet hoses don't interfere with the lower inner fender bracket.

