

Installation instruction do88 Inlet pipe for Volvo V40 S60 V60 V70 S80 07-16 5-cyl petrol Turbo



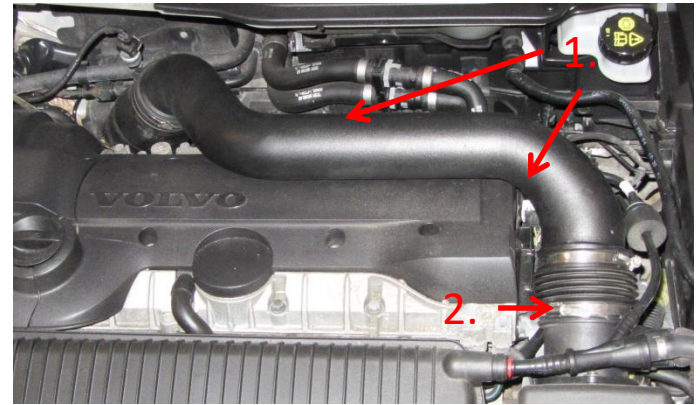
This instruction shows how to replace the OEM inlet pipe with do88 performance inlet pipe.

At this type of installation we always recommend that you have mechanical experience and knowledge about safety during work on vehicles.

Parts included:

1. Inlet pipe 1pc
2. Hose pipe-turbocharger 1pc
3. Hose ammeter-pipe 1pc
4. Hose clamps 4pc
5. Bracket inlet pipe 1pc
6. Flanged screw M8x12 1pc
7. Silicone cap 6mm 2pcs

1. Remove the 2pcs hex head screws (1.) and the hose clamp from air mass meter side (2.)

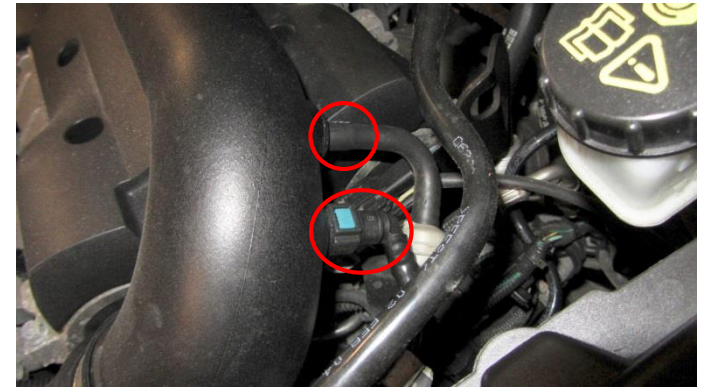


2. Loosen the hose clamp from turbocharger inlet. It might be hard to reach depending on which direction the clamp screw points. In some cases it might be easier to reach from underneath the car.



3. Remove 1 or 2 hoses (depending on car version) attached to lower rear part of the inlet pipe close to the brake fluid reservoir. The hose without clamp/connector are easily pulled loose from the pipe. The hose with connector are removed by pushing in the blue plastic clips on each side of it at the same time as you pull out the hose from the pipe.

Then remove the OEM inlet pipe with its 2 hoses from car.



4. Install the hose pipe-turbocharger on the turbocharger inlet with hose clamp 60-80mm on the small side and hose clamp 70-90mm on large side. Do not tighten the clamps at this time.

Adjust the hose on turbocharger so it points like hose on picture.



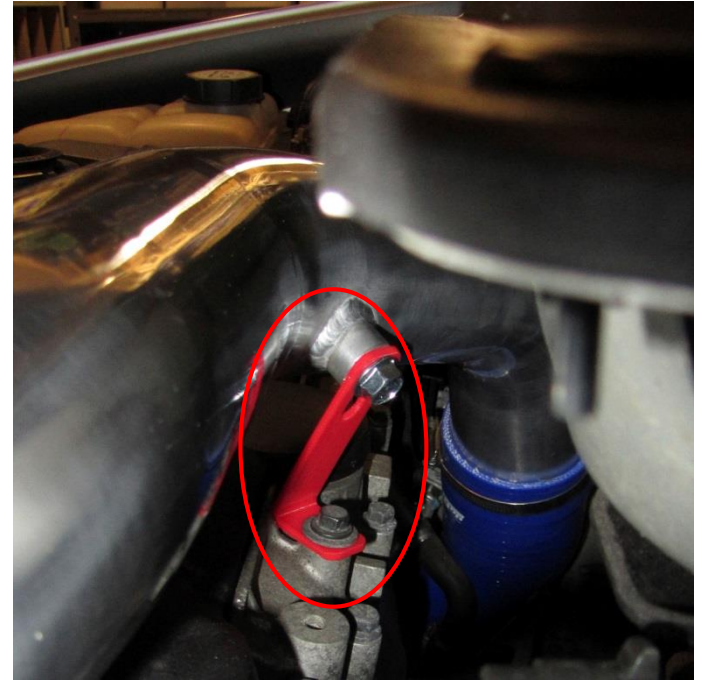
5. Install the hose amm-pipe on the pipe (with smaller diameter side on pipe) with 2pcs 70-90mm hose clamps installed but not tightened.

Insert the other end of the pipe in the hose positioned on turbocharger and adjust pipe/hoses so the other hose can be positioned on the air mass meter according to picture.



- 6.** Adjust the pipe and hose positions so the pipe get in a position where you are able to install the included bracket (red on picture but black in pipe kit) fits between cylinder head and inlet pipe. In this position, install the bracket with the OEM screw removed when removing OEM inlet pipe and the included M8x12 flanged screw according to picture.

Tighten all 4 hose clamps.



- 7.** Install the hose/hoses on the inlet pipe hose nipples by pushing them in place. If your car only have one hose, seal the non used inlet pipe nipple with the included silicone cap.

